

A HOME TO ENABLE

# Wagga Wagga, NSW



*"We shape our buildings,  
thereafter they shape us."*

WINSTON CHURCHILL



DPN CASA CAPACE

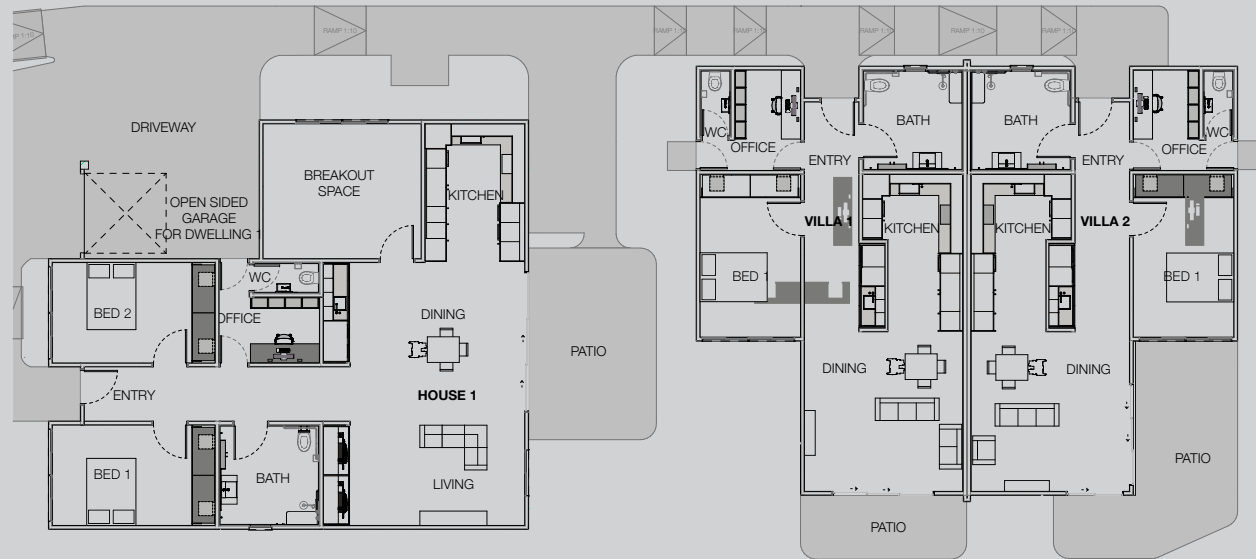
## Beautiful living experiences for Australians with disabilities

A home to enable. We've created a beautiful living environment matched with assistive technology capabilities and innovation in its build. This home represents contemporary living at its finest.

Like nothing before, this home has been purposely designed with the residents in mind. It offers occupants functionality, accessibility and durability. This stylish home lives up to rigorous quality and safety standards, providing an exceptional living space.


Located in an established community, this home brings hand-picked, curated interiors and colour palettes, fixtures and finishes with an emphasis on design, coupled with a calm, luxury feel.

Built to SDA Design Category:  
High Physical Support, Improved  
Liveability, Fully Accessible, Robust.



*“These homes are built on the unwavering philosophy that functionality and beautiful design should be accessible to all.”*

**AARON STEVENS**  
*Architect*

A modern bedroom with a bed, wardrobe, and bedside table. The room features a bed with a dark grey duvet and two pillows, a wardrobe with a hanging garment, and a bedside table with a lamp. The floor is made of light-colored wood. The room is well-lit with warm lighting.

PROPERTY INCLUSIONS

## A home to enable

### BEDROOMS

An accessible, wheelchair-friendly wardrobe. The doors have a wider than standard design for wheelchair access with an additional wheelchair charging bay in the wardrobe. Structural supports can accommodate a hoist if required. All external sliding doors have a zero threshold, meaning the surfaces are completely flush with no trip hazards.

### KITCHENS

Equipped with high quality, state of the art appliances with better haptic feedback and accessible features to enable easier use. Height adjustable benches to accommodate cooking from a wheelchair.

## LAUNDRIES

Height adjustable benchtops are accessible from a standing or seated position to enable chores to be done independently. All cupboards have full length handles in colours carefully selected to provide contrast for the visually impaired. Dedicated wheelchair charging bay or purposely located wheelchair charging zones in therapy rooms.



## SUPPORT WORKER OFFICES

Secure medicine fridge, filing and storage lockers are available for resident and support worker's safety and privacy. The office is lockable with a secure exit to the patio. An admin control panel on the wall gives full access to all automation in the house. Support workers can sleep on a fold down bed for maximum space efficiency.





PROPERTY INCLUSIONS

## A home to enable

### BATHROOMS

Fully accessible to Australian Standards 1428.1. Reinforced ceilings and walls to take a hoist, fittings or fixtures, if required. A warm colour palette and high-quality fittings give a calm luxurious feel.

The bathroom doors can be automated to provide easy access into the room. When automated, an information panel on both sides of the door allows occupants to see if the room is in use and if the door has been successfully locked.

With an information panel on both sides of the door, occupants can see if the room is in use and if the door has been successfully locked. The wall mounted sink is custom designed and accessible from either a seated or standing position and a storage unit is provided for each participant.

### LIVING / DINING

High ceilings provide light and open space, with large communal living areas. Automation of the lights, curtains and entertainment system can easily be included and controlled by Siri or with the Apple Home app. The porcelain floor tiles have been selected for their non-porous nature and ability to repel germs.

### THERAPY ROOM

An extra living space designed for flexible living, breakout or therapy sessions.

### **CAR SPACES**

The carport and car spaces are fully accessible and designed for transport vehicles. A mini-bus with rear or side loading can pull up and easily get people in and out.

### **OUTDOOR LIVING**

The doorways to the garden have a zero threshold, meaning the surfaces are completely flush, no steps or trip hazards. With participants in mind, there are multiple outdoor spaces to enjoy, alone or with company.

A communal BBQ area is located between the dwellings with shelter under the patio or awning.

### **SECURITY**

The house features flood lights on sensors which illuminate on approach. It also includes a video intercom system linked with support workers and participants as required.



WAGGA WAGGA NSW

## Community profile

### SHOPPING

Only 7km away in the heart of Wagga Wagga, The Sturt Mall and Wagga Marketplace will provide all the shopping amenities you need. Coles, Woolworths and Aldi are all within a short distance of each other along with over 100 others stores.

### HOSPITALS

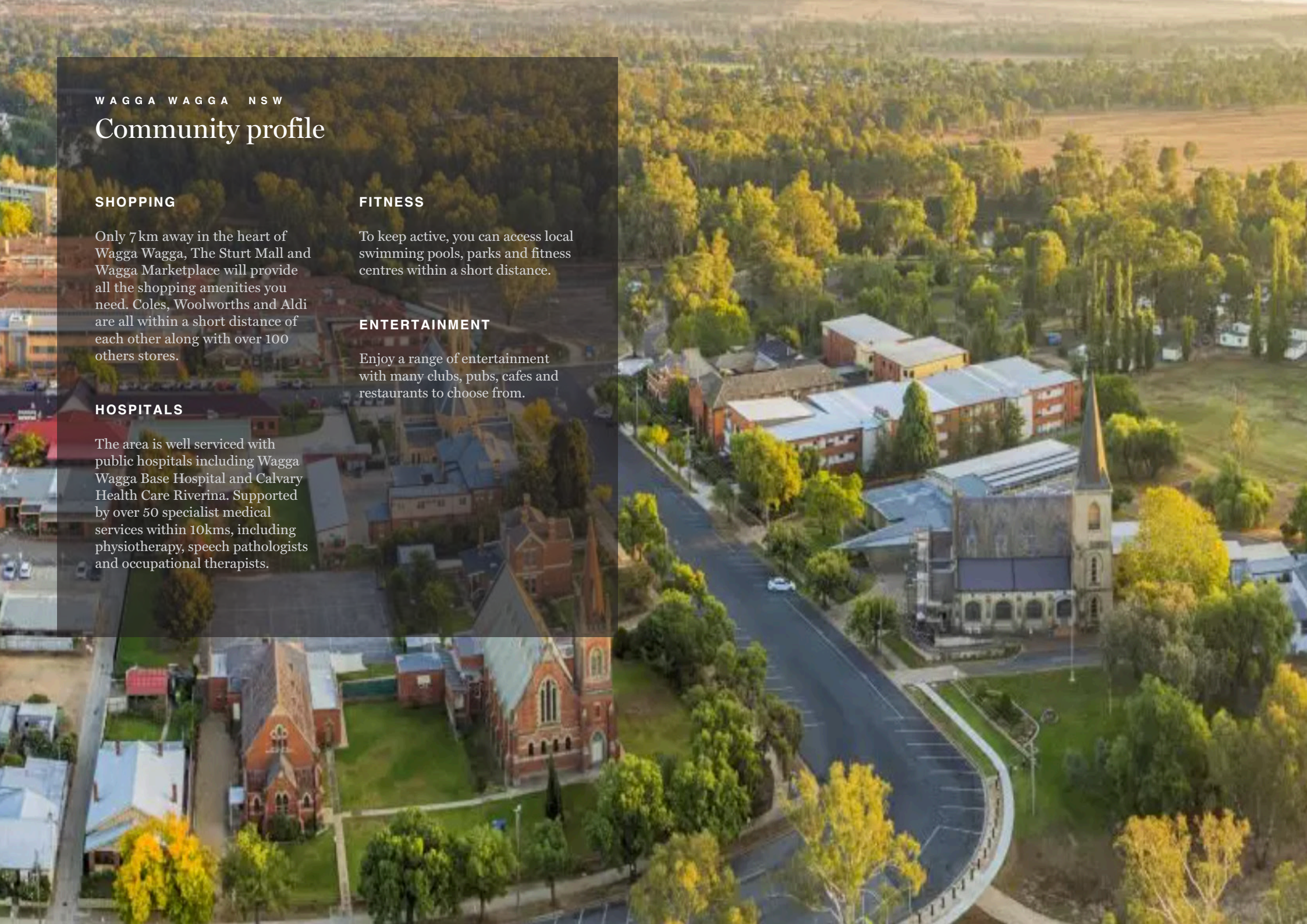
The area is well serviced with public hospitals including Wagga Wagga Base Hospital and Calvary Health Care Riverina. Supported by over 50 specialist medical services within 10kms, including physiotherapy, speech pathologists and occupational therapists.

### FITNESS

To keep active, you can access local swimming pools, parks and fitness centres within a short distance.

### ENTERTAINMENT

Enjoy a range of entertainment with many clubs, pubs, cafes and restaurants to choose from.





## TRANSPORT

The bus route 966 will take you from Gobbagombalin to Wagga Wagga via neighbouring suburbs of Estella, Boorooma and North Wagga Wagga. The train station in Wagga provides you with transport to destinations including Sydney, Melbourne, Griffith, Albury and Canberra. There is also Coaches that take you to other local and major regional areas.





#### ABOUT CASA CAPACE

## Changing the landscape, for good

Casa Capace has been developed specifically to cater for Australians requiring Specialist Disability Accommodation (SDA). Our experience and expertise enables a more attractive home, with greater flexibility and value for participants of the National Disability Insurance Scheme (NDIS).

It's our mission to challenge the unmet demand for SDA housing and to positively influence the lives

of thousands of NDIS participants, their families, friends and those who care for them.

Casa Capace is a registered provider of SDA with the NDIS.


We partner with high quality Supported Independent Living (SIL) providers to create beautiful homes for Australians with disabilities.

**BELIEVING IN BETTER**

**How do I live in a Casa Capace home?**

To live in our homes you need to:

1. Be an NDIS Participant.
2. Have SDA included in your NDIS plan.  
If you are not sure about this, please contact us and we will assist you in finding out if you are eligible.
3. Once you are eligible, we work with our SIL partner(s) to help get you into a beautiful Casa Capace home.



*“Our passion is to help you live the life you want.”*

**SAM KHALIL**  
*Group Managing Director*

CONTACT US TODAY



SDA PROVIDER

Casa Capace

E. [mycasa@dpn.com.au](mailto:mycasa@dpn.com.au)

P. 1300 723 318

W. [casacapace.com.au](http://casacapace.com.au)

SIL PROVIDER

Northcott

P. 1300 601 868

W. [northcott.com.au](http://northcott.com.au)



PROPERTY REFERENCE NUMBER CCP-0054

*Live the life you want™*